



Specifications

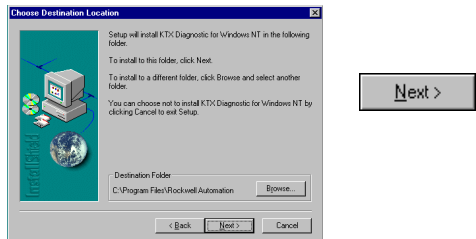
The operation parameters describe the environment within the KTx slot. Refer to the documentation for your computer for environmental requirements. The KTx card should not exceed those specifications.

| | |
|---|---|
| Operational slot temperature | 0 to 60°C (32 to 140°F) |
| Non-operational slot temperature | -40 to 85°C (-40 to 185°F) |
| Relative humidity | 5 - 95% without condensation |
| Vibration | 10 - 60 Hz, constant 0.012 in displacement |
| Operational shock | 30 G peak for 11 ± 1 ms |
| Non-operational shock | 50 G peak for 11 ± 1 ms |
| Power dissipation (for the 1784-KTXD) | 600 mA @ 5V dc 3.15 W 20 mA @ ±12V dc 240 mW 20 mA @ -12V dc 240 mW |
| Agency Certification (when product or package is marked) | <div><div><div>• </div><div>•  Marked for all applicable directives</div></div></div> |

Conventions

We use these conventions in this manual:

For Windows applications screen displays and prompts are shown as screen and button captures:



For DOS applications screen displays and prompts are shown as screen captures and text instructions.

- Press `ENTER` to continue with the installation
- **F10**
- Text that you type is shown as:

`a:\install c:`

Summary of Changes

Several additions and changes to the KTx card and software information have been made. The additions and changes to this manual include:

| Information on: | Is in: |
|----------------------------|------------|
| how to handle the card | Preface |
| Rockwell Software support | Preface |
| supported features | Chapter 1 |
| diagnostics for Windows NT | Appendix A |

Revision Bars

We use revision bars to call your attention to new or revised information. A revision bar appears as a thick black line on the outside edge of the page as indicated here.